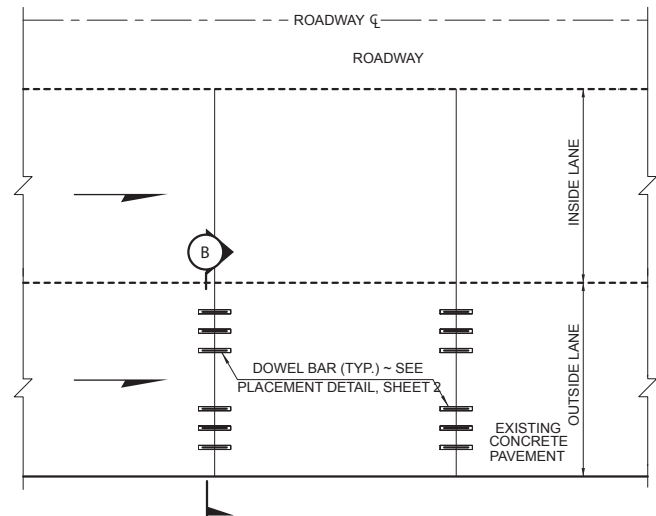
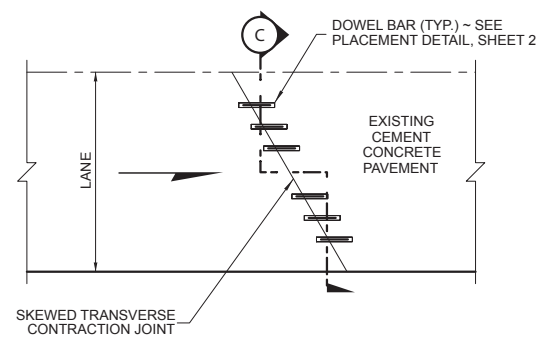


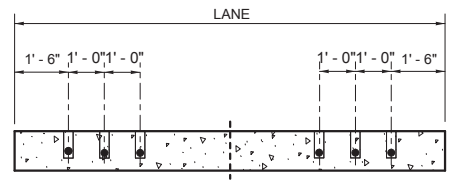
PLAN VIEW
DOWEL BAR RETROFIT
 FOR TWO LANE DIVIDED HIGHWAY (ONE WAY TRAFFIC)
 FOR EACH LANE IN UNDIVIDED HIGHWAY (TWO WAY TRAFFIC)



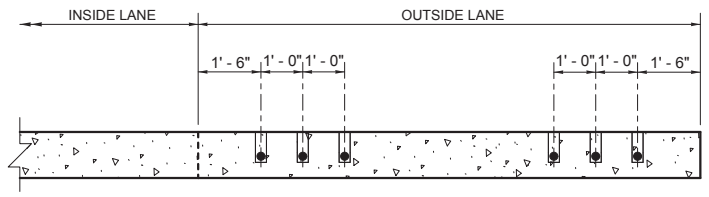
PLAN VIEW
DOWEL BAR RETROFIT FOR ONE LANE
 DIVIDED HIGHWAY (ONE WAY TRAFFIC)



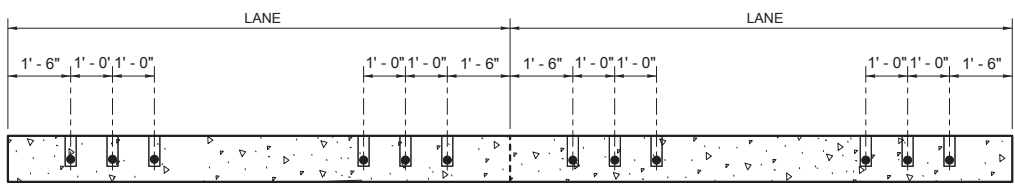
PLAN VIEW
SKEWED JOINT DETAIL



SECTION C



SECTION B



SECTION A

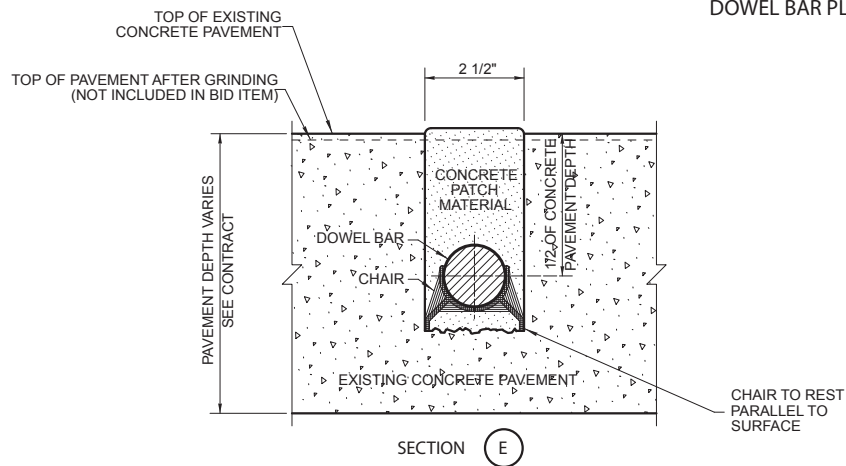
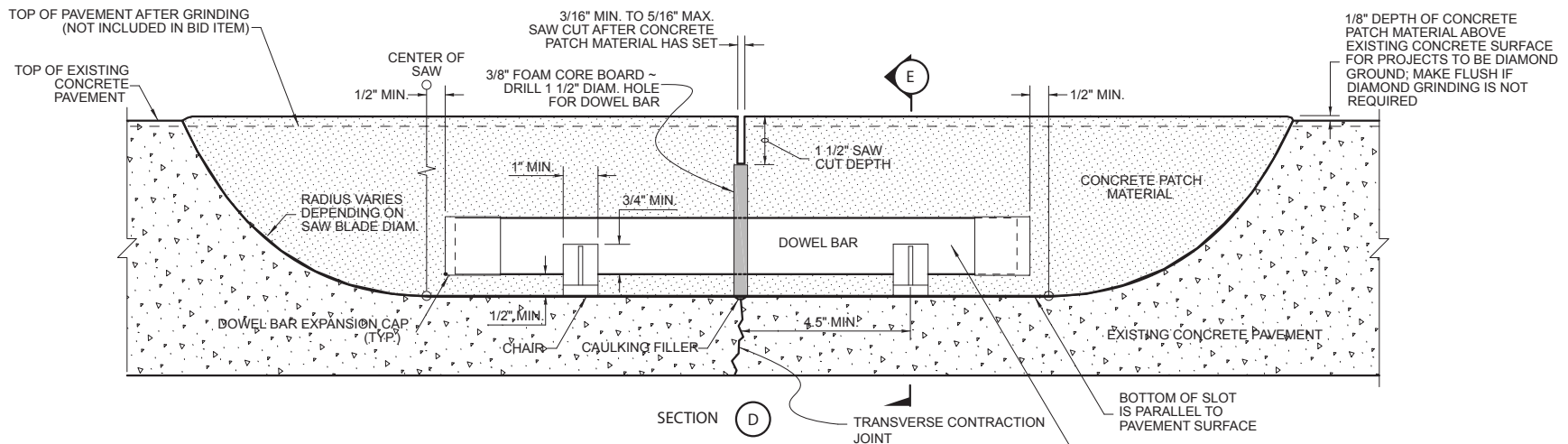
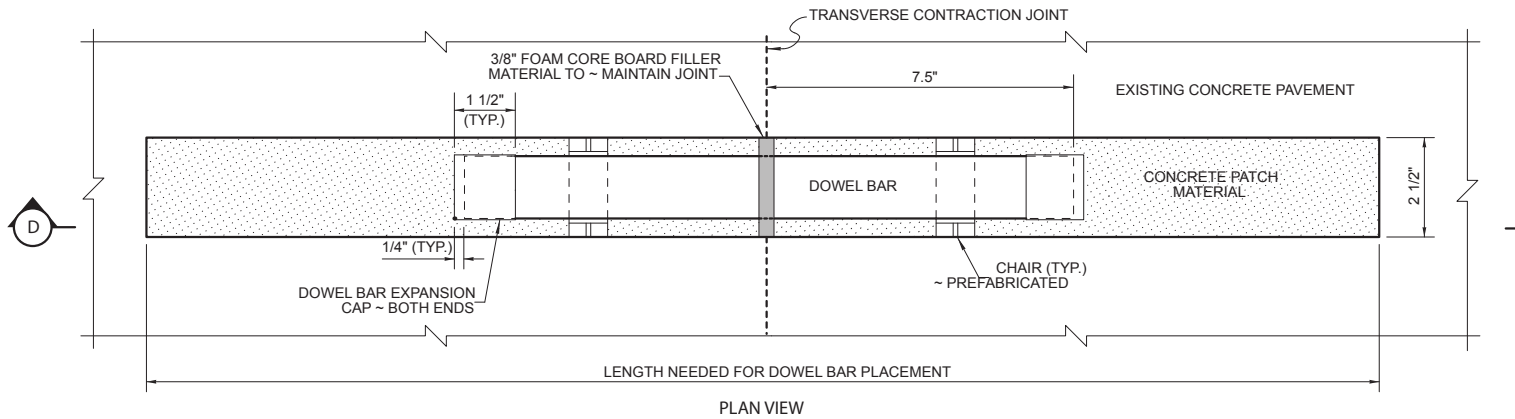


**DOWEL BAR RETROFIT
 FOR CONCRETE PAVEMENT**

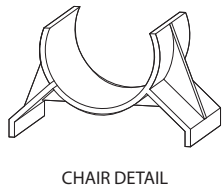
SHEET 1 OF 2 SHEETS

04-21-11

ADAPTED BY THE INTERNATIONAL GROOVING & GRINDING ASSOCIATION (IGGA) AND THE AMERICAN CONCRETE PAVEMENT ASSOCIATION FROM WASHINGTON STATE DEPARTMENT OF TRANSPORTATION (WSDOT) STANDARD PLAN A-60.20-01, DOWEL BAR RETROFIT FOR CEMENT CONCRETE PAVEMENT, 08-11-09; PERMISSION TO USE AND MODIFY DRAWING PROVIDED COURTESY OF WSDOT.



RECOMMENDED DOWEL DIAMETER	
PAVEMENT THICKNESS	DOWEL DIAMETER
≤ 8 inches	1 inch
8.5 to 10.5 inches	1 1/4 inches
≥ 11 inches	1 1/2 inches



DOWEL BAR RETROFIT FOR CONCRETE PAVEMENT

SHEET 2 OF 2 SHEETS

04-21-11

ADAPTED BY THE INTERNATIONAL GROOVING & GRINDING ASSOCIATION (IGGA) AND THE AMERICAN CONCRETE PAVEMENT ASSOCIATION FROM WASHINGTON STATE DEPARTMENT OF TRANSPORTATION (WSDOT) STANDARD PLAN A-60.20-01, DOWEL BAR RETROFIT FOR CEMENT CONCRETE PAVEMENT, 08-11-09; PERMISSION TO USE AND MODIFY DRAWING PROVIDED COURTESY OF WSDOT.